

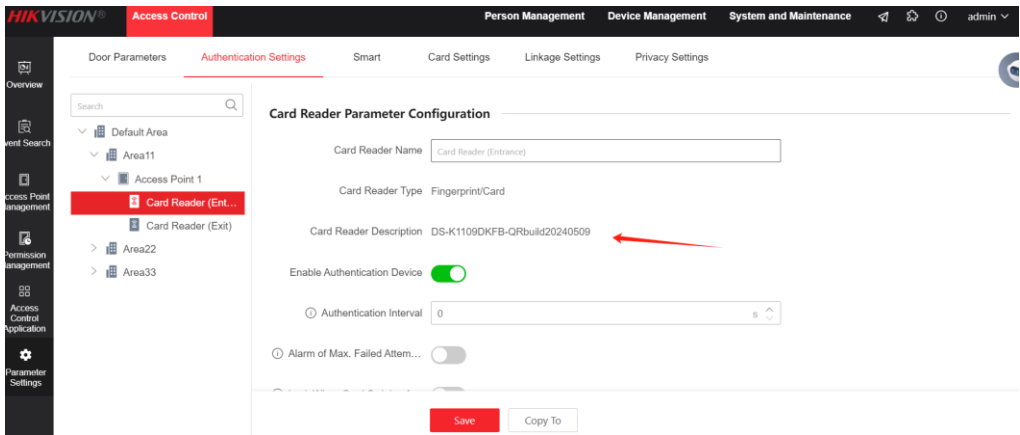
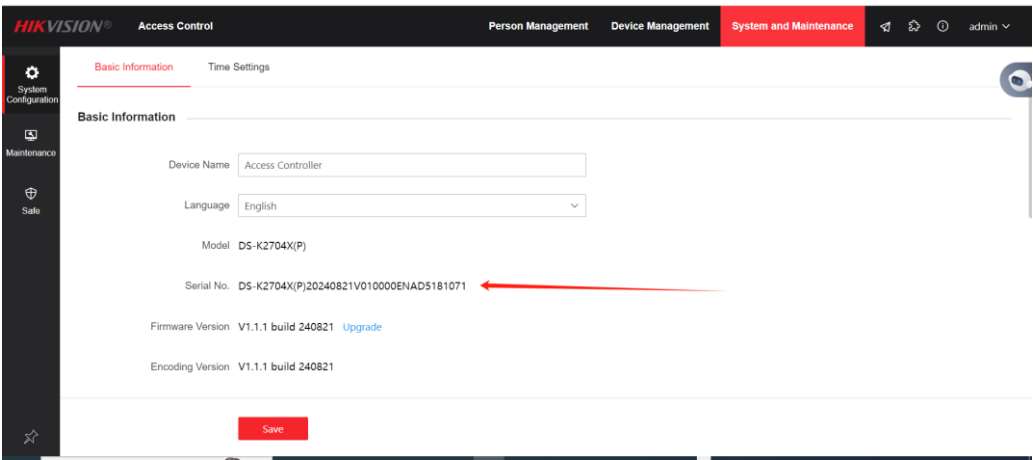
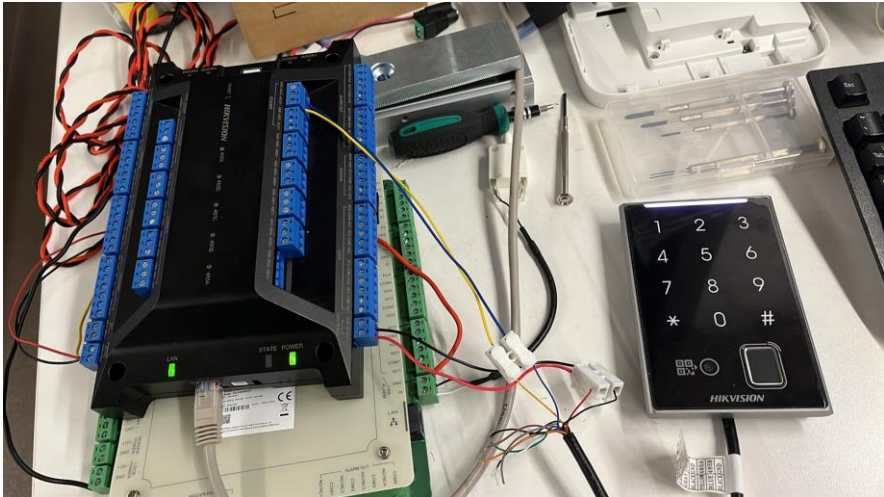


**How to configure K27 series controller Bluetooth mode
with K1109 on HCAC APP**

Title:	How to configure K27 series controller Bluetooth mode with K1109 on HCAC APP	Version:	v1.0	Date:	24/09/2024
Product:	IP Camera			Page:	1 of 3

Preparation

1. The right connection and installation of K27 series controller and K1109 card reader and check the firmware of each device on webpage.
2. Download latest HikCentral AC App or HikCentralProfessional App on your smart phone.



Title:	How to configure K27 series controller Bluetooth mode with K1109 on HCAC APP	Version:	v1.0	Date:	24/09/2024
Product:	IP Camera			Page:	2 of 3

How to configure K27 series controller Bluetooth mode with K1109 on HCAC APP

1. Website configure

- 1) Add the person and enable the Bluetooth function and add a access level to the person.

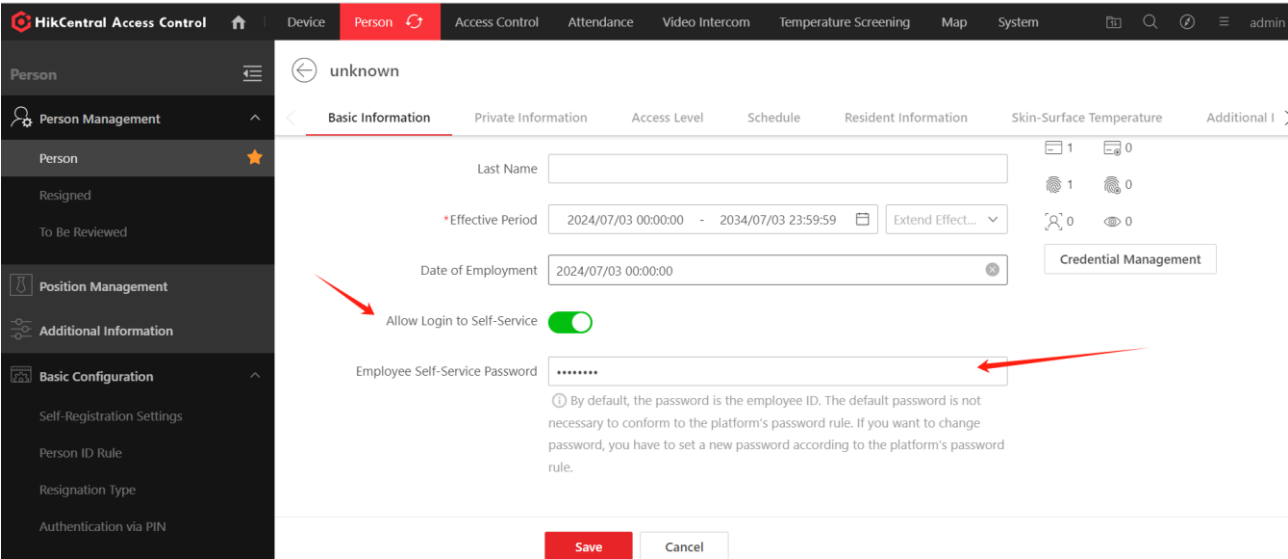
The screenshot shows the HikCentral Access Control web interface. The left sidebar contains navigation options: Person, Person Management, Person, Resigned, To Be Reviewed, Position Management, Additional Information, and Basic Configuration. The main area is titled 'unknown' and has tabs for Basic Information, Private Information, Access Level, Schedule, Resident Information, Skin-Surface Temperature, and Additional Information. The 'Access Level' tab is active. It shows a checkbox for 'Device Administrator' (unchecked) and a checkbox for 'Open Door via Bluetooth on Mobile Client' (checked, with a red arrow pointing to it). Below this is a 'PIN Code' field. The 'Access Level' section has '+ Assign' and 'Unassign' buttons. A table below shows the assigned access levels:

Access Level Name	Access Schedule Template	Access Point
t1	All-Day Template	Access Control:12

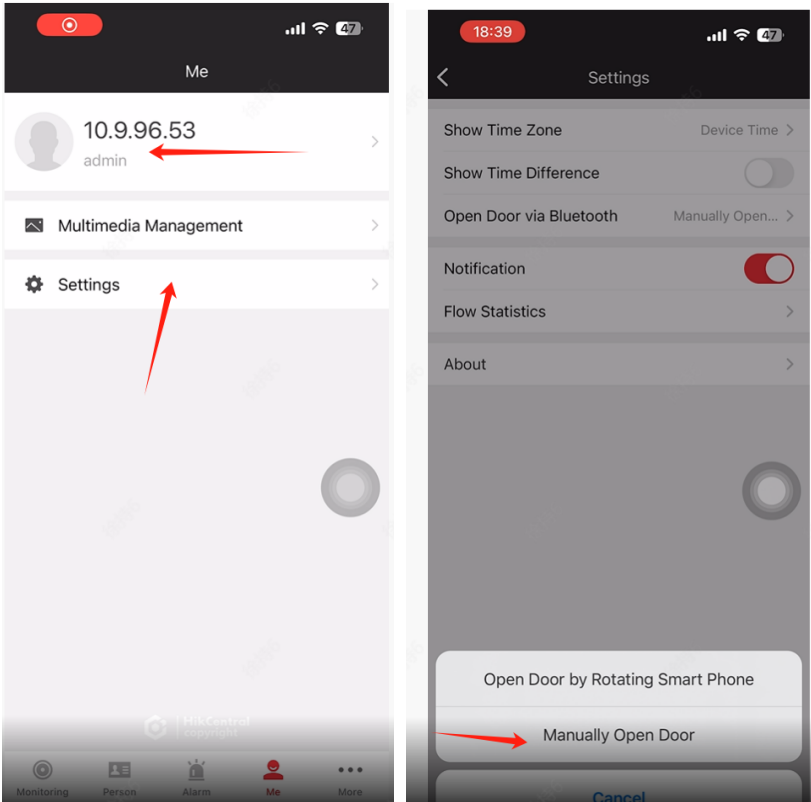
At the bottom, there are 'Save' and 'Cancel' buttons. A red arrow points to the 't1' entry in the table.

- 2) Enable self-login on App Function and set a password.

Title:	How to configure K27 series controller Bluetooth mode with K1109 on HCAC APP	Version:	v1.0	Date:	24/09/2024
Product:	IP Camera			Page:	3 of 3

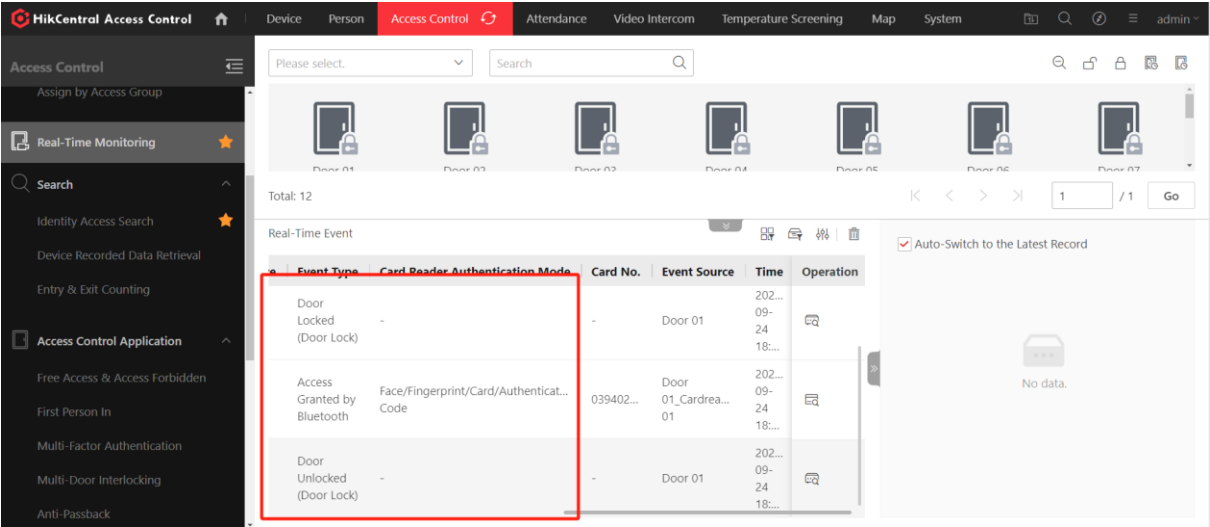
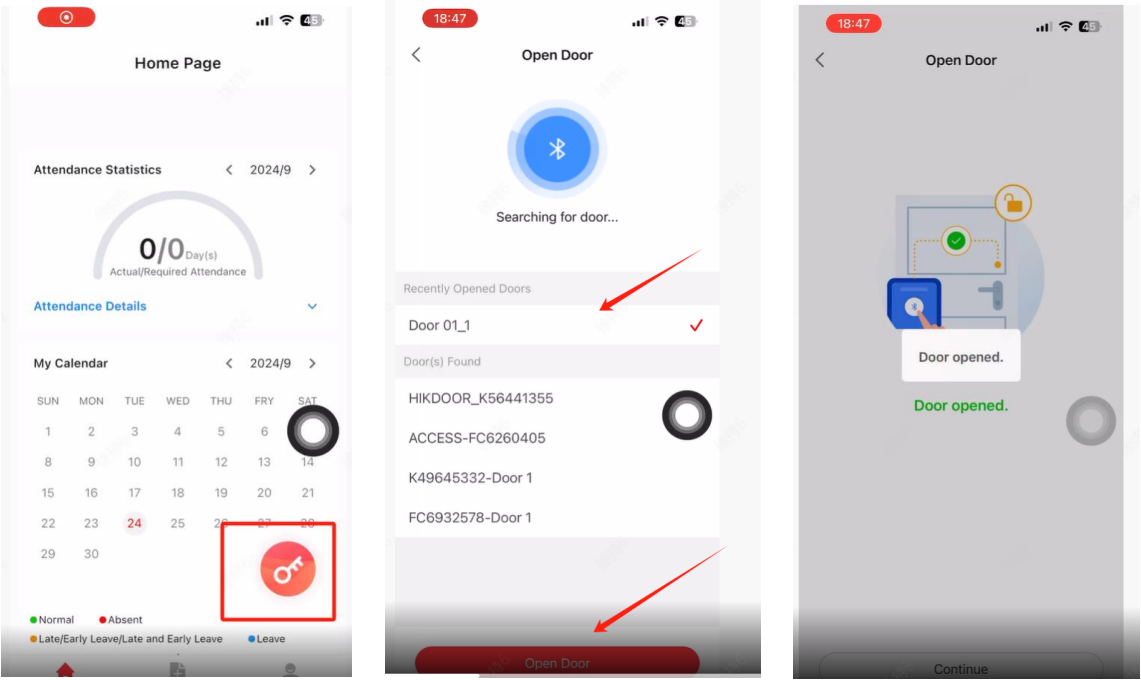


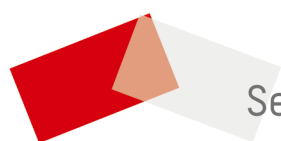
3) Login administrator account to set the Bluetooth mode.



4) Login the employee account and test the Bluetooth door open function and on website, we can see the authorization record.

Title:	How to configure K27 series controller Bluetooth mode with K1109 on HCAC APP	Version:	v1.0	Date:	24/09/2024
Product:	IP Camera			Page:	4 of 3





See Far, Go Further